



No mechanical stress on the rotor during measuring

Determination of unbalance and rotor weight

Simple, inexpensive rotor adapters

No drive and no guard required

Short measuring cycles

Highly efficient measuring unit CAB 845 with embedded PC and touch screen

Available in 2 designs:

- **Table-top design (ESA - ESD)**
- **Housing design for big rotors (ESE/ESF)**

Static Balancing Machine

Series ESA - ESF

Application

Measurement of the static unbalance of disc-shaped rotors, e.g. unhardened grinding wheels, propellers and fans.

Unbalance correction by addition of material directly on the machine or by removal of material on separate correction units.

Use of the machine for the measurement of unbalance, for tasks with unbalance correction in production, in incoming inspection, for final balancing and for weight measurement.

Special features

Direct display as soon as tolerance limits are reached, operator prompting during calibration, calibration data memory for an easy change-over to other types on key depression.

Compact design ensures universal applicability

Program for the compensation of adapter errors, test program with the display of operating or system errors, checking of process via the host computer is possible, integral product database.

Options

- calculations for unbalance correction
- Statistics
- Interface adaptation
- Integration with PLC for use in production lines
- Connection to the PLC for assembly lines is possible.

Important data at a glance

Machine type	ESA	ESB	ESC	ESD	ESE	ESF
Load capacity of the balancing unit kg	< 1	< 3	< 6	< 20	< 60	< 200
Diameter, max. ¹⁾ mm	250	250	500	1000	1000	1500
Measurable unbalance, max. kgmm	50	90	120	290	5100	14100
Uncertainty of measurement ²⁾ gmm	0,5	3	5	12	25	50
Measuring cycle sec	2 ... 5					
Power supply, standard	100 - 240 V, 50/60 Hz					
Typical rotor types						
Grinding wheels	•	•	•	•	•	•
Wheel hubs, brake drums, brake discs		•	•	•		
Clutch components, flywheels	•	•	•	•		
Fans, blowers	•	•	•	•	•	
Chaff-cutter rotors	•	•	•			
Railroad wheels						•
Vehicle wheels				•	•	
Wheel assemblies				•	•	•
Propellers				•	•	•

1) Larger diameters are possible in special cases, probably lifting table required

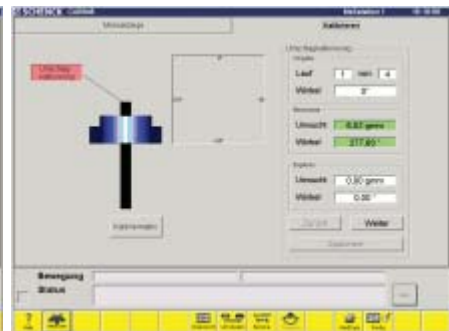
2) Acc. to DIN 1319 without adapter error



Measuring screen CAB 845



Change-over screen



Calibration screen

SCHENCK

**Balancing and
Diagnostic Systems**

SCHENCK RoTec GmbH
Landwehrstraße 55
D-64293 Darmstadt

Tel.: +49 (0) 61 51 - 32 23 11
Fax: +49 (0) 61 51 - 32 23 15
eMail: rotec@schenck.net



Table top version, series ESA to ESD



For rotors of 600-1600 kg, we recommend our series CBWG to CBWH

Make use of our worldwide distribution network.
Please see us at <http://www.schenck-rotec.com>

The **DÜRR** Group